


© COPYRIGHT 2013 TEXAS INSTRUMENTS  
UNPUBLISHED, ALL RIGHTS RESERVED

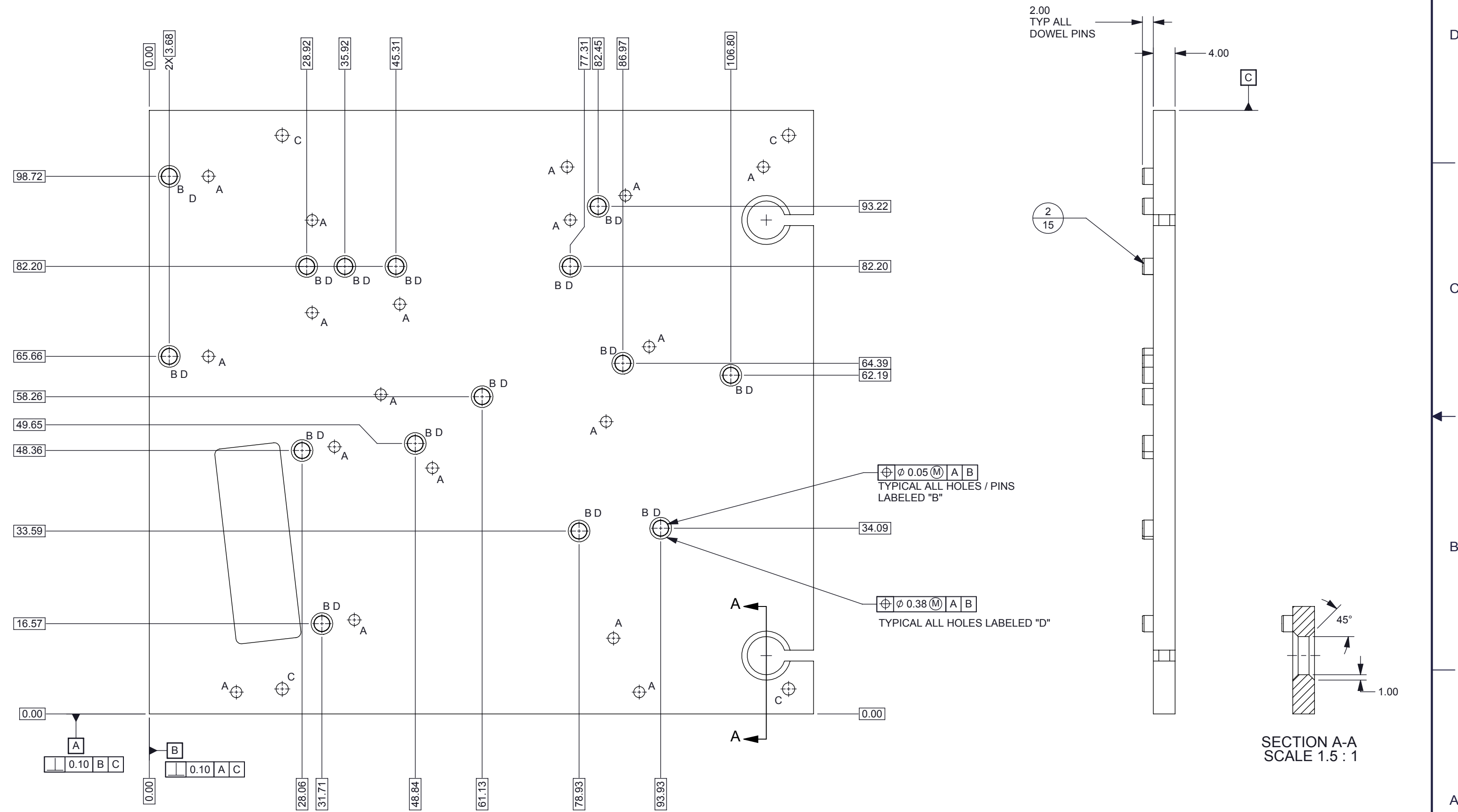
DWG NO 2513376		SHEET 1	1
REVISIONS			
REV	DESCRIPTION	DATE	BY
A	ECO #2136196 - INITIAL RELEASE	9/20/13	
B	ADDED <span style="border: 1px solid black; padding: 0 2px;"> </span> 4.00 $\nabla$ 0.50 FOR EACH HOLE "B"	12/11/13	SS

- NOTES:
1. MATERIAL: 6061-T6 ALUMINUM
  2. LIGHT BEAD BLAST (MATTE FINISH)
  3. FINISH: ANOPLATE ANOBLACK EC PROCESS.
  4. ALTERNATE BLACK ANODIZING PROCESSES NOT CONSIDERED AN EQUIVALENT.

15	2	DOWEL PIN 3MM DIA X 6MM LG	DOWEL PIN 3MM DIA X 6MM LG	
1	1	2513375	BASE PLATE	
QTY	ITEM	PART NUMBER	DESCRIPTION	Notes

		UNLESS OTHERWISE SPECIFIED	DWN R ROWE	DATE 9/7/2013	 TEXAS INSTRUMENTS		
			Engr		BASE PLATE ASSY		
			CQE/QA				
			CM		SIZE DWG NO B 2513376 REV B		
					SCALE 1.5:1 SHEET 1 OF 3		
NEXT ASSY	USED ON		Apprvd				
APPLICATION							
		<ul style="list-style-type: none"><li>DIMENSIONS ARE IN MILLIMETERS</li><li>TOLERANCES: ANGLES ±1° 2 PLACE DECIMALS ±0.25 1 PLACE DECIMALS ±0.50</li><li>DIMENSIONAL LIMITS APPLY BEFORE PROCESSES</li><li>INTERPRET DIMENSIONS IN ACCORDANCE WITH ASME Y14.5M-1994</li><li>REMOVE ALL BURRS AND SHARP EDGES</li><li>PARENTHETICAL INFO FOR REF ONLY</li></ul>					

HOLE TABLE		
SYMBOL	QTY	HOLE DESCRIPTION
A	18	TAP M2.5 x 0.45 THRU
B	15	INSTALL $\varnothing$ 3.00 X 6.00 LONG DOWEL PIN
C	4	TAB #4-40 THRU
D	15	<span style="border: 1px solid black; padding: 0 2px;"> </span> 4.00 $\nabla$ 0.50



SECTION A-A  
SCALE 1.5 : 1

D

D

C

C

B

B

A

A

